



# COMPANY PROFILE

国華産業株式会社  
KOKUKA SANGYO CO.,LTD

We founded Kokuka Sangyo Co., Ltd. in 1947 and have been involved in the shipping industry, starting with the transportation coal, carbon disulfide, caustic soda, and other raw materials used in the artificial silk industry with our own vessels. Since then, we have expanded our business to include the transport of organic and specialty chemicals. To achieve these goals, we built Japan's first chemical tanker, molten sulfur carrier, medium-temperature and medium-pressure liquid ammonia tanker, the world's first molten phthalic anhydride and molten caprolactam carriers, and so forth. Now, with over 70 years of history behind us, we are engaged in the coastal and international shipping of mainly methanol and molten sulfur.

We humbly request your redoubled support as we intensify our efforts as a company to provide higher-quality services with a focus on safety so that we can inspire trust befitting our knowledge and experience.

Toru Maehara  
President

### **Corporate Philosophy**

- To contribute to economic and social development through the maritime transportation of chemical products.
- To earn the trust of society and customers through high-quality services that treat safe operations as the top priority.
- To conduct business with emphasis on compliance.
- To manage the company so as to ensure that the employees work happily and find the job rewarding.

## **【Profile】**

### **【Establishment】**

March 3, 1947

### **【Capital】**

JPY 100 million

### **【Main shareholders】**

MITSUBISHI GAS CHEMICAL  
COMPANY, INC.  
TATSUMI SHOKAI CO.,LTD.

### **【Employees】**

103  
(as of March 2020, including  
affiliated companies)

### **【Headquarters】**

RESONA SHIMBASHI BUILDING 5F  
16-4, SHIMBASHI, 1-CHOME,  
MINATO-KU, TOKYO, 105-0004  
JAPAN  
TEL:+81-3-3593-3663  
FAX:+81-3-3593-2272

### **【MAP】**



**Kokuka Sangyo Co., Ltd.**  
RESONA SHIMBASHI BUILDING 5F  
16-4, SHIMBASHI, 1-CHOME MINATO-KU,  
TOKYO, 105-0004  
TEL:+81-3-3593-3663 FAX:+81-3-3593-2272

▲ please click on MAP

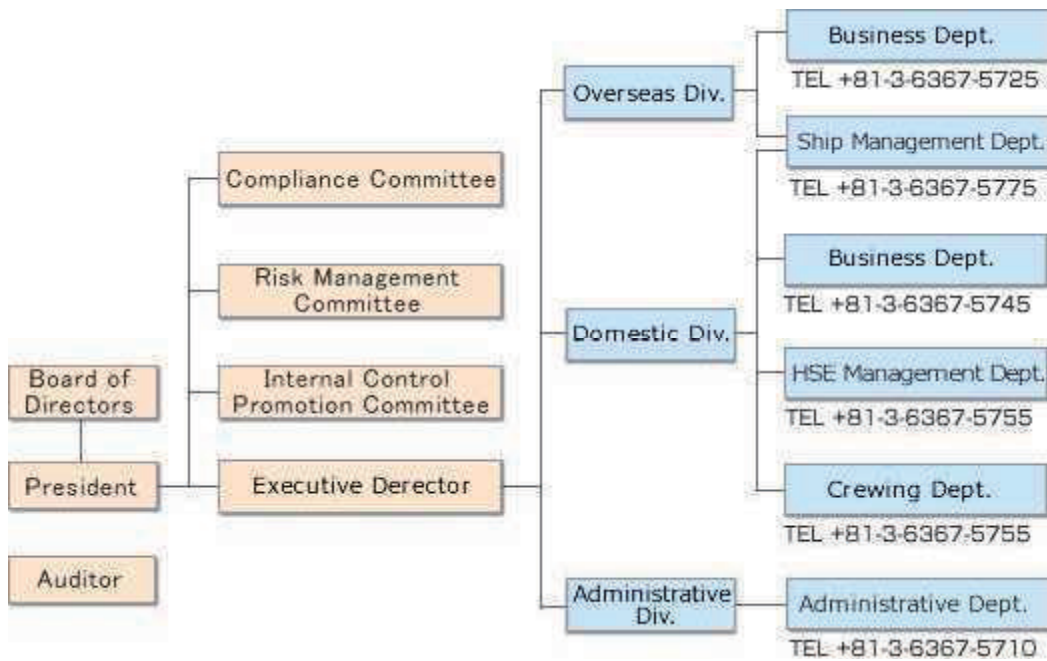
**【History】**

- 1947 Kokuka Sangyo Kaiun Co., Ltd. is established, with marine transport operation, non-life insurance agent operation and commercial business operation. Begins shipping operations for coals, Carbon sulfide and Sodium hydroxide. Headquarters is established in Ikuta-ku in Kobe City with JPY195,000 in capital.
- 1952 Headquarters is relocated to Kita-ku, Osaka City.
- 1954 The company name is changed to KOKUKA SANGYO CO., LTD.
- 1956 First Sodium hydroxide carrier is completed. Mihara Branch opens.
- 1960 First chemicals tanker "KOKURYU MARU" is completed, begins domestic operation.
- 1961 Capital increases to JPY 5 million by capital participation of Japan Gas Chemical Co., Inc. (current MITSUBISHI GAS CHEMICAL COMPANY, INC.).
- 1964 A chemicals tanker "KOKUHO MARU" is completed, enters oceangoing business. The world's first tanker for high temperature molten materials "OUKA MARU" is completed for shipping Molten phthalic anhydride. The Japan's first medium temperature, medium pressure ammonia tanker "KOKUSHU MARU" is completed.
- 1967 The world's first molten Caprolactam carrier "EIKA MARU" is completed. Japan's first molten Sulphur carrier "KOKA MARU" is completed.
- 1968 Tokyo branch opens in Nishi-shinbashi, Minato-ku, Tokyo. Stainless tanker "YUKA MARU" is completed.
- 1975 Capital increases to JPY 250 million, Matsuyama Branch opens.
- 1980 IWAI KAIUN LTD. is established.
- 1989 Container ship "NISHO MARU" is completed.
- 2001 Stock is transferred from TEIJIN LIMITED to MITSUBISHI GAS CHEMICAL COMPANY, INC.
- 2002 Enters business of shipping Methanol from Saudi Arabia.
- 2003 Enters business of shipping Methanol from Venezuela.
- 2005 Headquarters is relocated to Toranomom, Minato-ku, Tokyo. A Hydrogen peroxide carrier "RYOJITSU MARU" is completed.
- 2008 Super eco ship "KOKUHO MARU" is completed.
- 2009 Our largest chemicals tanker "JOSE PROGRESS" is completed.
- 2010 Headquarters is relocated to Uchisaiwaicho, Chiyoda-ku, Tokyo.
- 2011 Capital reduction to JPY 100 million.
- 2013 Receives TATSUMI SHOKAI CO., LTD.'s capital participation.
- 2015 An LAG carrier "KOKUSHU MARU" is completed.
- 2020 Headquarters is rebcated to Shimbashi, Minato-ku, Tokyo.

## 【Directors】

President	Toru Maehara
Vice President	Kimifumi Imagawa
Director	Daisuke Korin
Director	Atsushi Toda
Auditor	Kazuma Kiuri
Auditor	Suguru Yoshimoto

## 【Organization】





**[Affiliated Companies]**

IWAI KAIUN LTD.      RESONA SHIMBASHI BUILDING 5F  
16-4, SHIMBASHI, 1-CHOME, MINATO-KU,  
TOKYO, 105-0004 JAPAN  
TEL +81-3-6367-5799  
FAX +81-3-3593-2272

KSK (PANAMA) CORP.  
M&K OCEAN S.A.  
COURAGEOUS & KSK(PANAMA) S.A.  
GLORIOUS & KSK(PANAMA) S.A.  
VIGOROUS & KSK(PANAMA) S.A.

**【Main Customer】**

ADEKA CHEMICAL SUPPLY CO.,LTD.  
ASAHI TANKER CO., LTD.  
AST CORPORATION  
CG ESTER CORPORATION  
Hanwa Co., LTD.  
INEOS Fluor Holdings Limited.  
JFE LOGISTICS CORPORATION  
Marubeni Corporation  
MARUZEN PETROCHEMICAL CO., LTD.  
Mexichem Fluor Japan Limited.  
MITSUBISHI CHEMICAL LOGISTICS CORPORATION  
Mitsubishi Corporation  
MITSUBISHI GAS CHEMICAL COMPANY, INC.  
MITSUI & CO., LTD.  
NANIWA TANKER CO., LTD.  
New Japan Chemical Co., Ltd.  
NIPPON RYUTAN KOGYO CO., LTD.  
Nippon Steel Chemical Co., Ltd.  
Sumika Logistics Co., Ltd.  
Sumitomo Chemical Co., Ltd.  
TATUMI SHOKAI CO., LTD  
Tokuyama Logistics Corp.  
UBE INDUSTRIES, LTD.

**【Cargoes】**

1.4-Butanediol	Molten caprolactam
Acetic acid	Molten sulphur
Acetone	MTBE
Acrylonitrile	Neopentyl glycol
Allyl alcohol	Nitric acid
Benzene	Petroleum products
Butadiene	Phenol
Carbon disulfide	Plasticizers
DMF	Propylene
Ethanol	Sodium hydroxide
Ethylbenzene	Styrene monomer
Ethylene glycol	Toluene
Hydrochloric acid	Vinyl acetate monomer
Hydrogen peroxide	Xylenes
Liquid ammonia	Others
LPG	
Methanol	
MMA	





Safety of the ships,  
Human lives and health,  
Environment,  
Property  
maintaining and preserving them  
is our principle.

It is our social mission to make broad social contribution through the marine transport of chemical products, and we believe our top priorities are safe marine navigation and environmental protection. In order to thoroughly communicate our belief both internally and externally, we have established the above “Principle”.

For the realization of the Principle, we have created “Safety Control Manual” in accordance with the ISM Code, and are utilizing it as the guidelines for our operational activities. Additionally, we continuously make improvements in the manual by applying the PDCA Cycle.

Recognizing that accidents must not occur, we have developed a system within our company to allow for the operations based on the technical and specialist perspectives. We have also developed a structure for the system to allow for individual teams to operate jointly and organically. The system consists of two teams-“HSE Management Dept., Crewing Dept. and Ship Management Dept.”

With our charter ship owners and domestic shipping management companies, we establish “Chartered Ship Management Regulation” and provide a support system based on the information provided about crew, maintenance record and such. We have also organized “KOKUKA Management Committee” in order to conduct joint safety activities by exchanging information and views.

## 【OVERSEAS DEPT.】

**Methanol Shipping**

Currently, we operate six chemicals tankers of between 6,000DWT and 47,000DWT, mainly carrying Methanol being produced in Saudi Arabia, Brunei and Venezuela. Primarily transporting from Middle East (Saudi Arabia) to the Far East and the Southeast Asia, from Southeast Asia (Brunei) to Far East and Southeast Asia, from South America (Venezuela)

to North America and Europe, we are currently shipping 1.8 million ton annually. To meet the growing demands created by the increasing production capability of the plants, we are further expanding our transportation capacity.

**Specialized Chemicals Shipping**

We offer shipping with high temperature Molten materials carriers. We have more than 40 years of experience in this area as the global pioneer, especially being highly reputable in the services provided for molten Sulphur and molten Ca prolacta m .



## 【DOMESTIC DEPT.】



KOKUHO MARU



KOKUSHU MARU



No2 SHUKA MARU

**Liquid Chemicals Shipping**

We offer domestic chemicals carrier with volume ranging from 1,000 to 2,000DWT, and are equipped with a variety of ships to handle all types of chemicals, running services nationwide.

Shipping items include general

liquid chemicals such as Methanol, Xylene and so on, as well as liquid

Ammonia, Hydrogen peroxide and Carbon disulfide. We

have gained trusts of our customers with our specialty tankers, operated with the many years of experience in the field, and

with our commitment to stable and safe shipping as our top priorities. We are daily making

further efforts for improvements in order to respond to the diverse

requests we receive.

**Specialized Chemicals Shipping**

We offer shipping with high temperature Molten materials carriers.

# Particulars



【Oceangoing】

Name	Cargoes	I M O	Dimensions(M)			GRT	DWT	Capacity	Draft	Speed	Built
			Length	Breadth	Depth			M3	M	Knots	
JOSE PROGRESS	CHEMICALS	3	185.93	32.20	19.30	30969	47,018	58,432	11.972	15.1	2009.02
KOHZAN MARU V	CHEMICALS	2	182.03	28.20	18.20	25184	37,784	46,695	11.30	14.9	2007.10
KOHZAN MARU VI	CHEMICALS	2	185.92	32.14	18.60	30017	47,962	55,211	12.220	14.9	2020.11
SAKURA ADVANCE	CHEMICALS	2	170.00	26.80	15.60	19349	27,000	33,600	10.281	14.3	2010.10
SAKURA CREST	CHEMICALS	2	170.00	26.80	15.60	19349	26,980	33,600	10.281	14.3	2011.08
SAKURA BELLE	CHEMICALS	2	170.00	26.80	15.60	19349	26,960	33,600	10.281	14.3	2011.03
ACACIA	CHEMICALS	2	132.40	20.00	11.90	8535	13,565	14,561	8.800	14.0	2010.09
RAKIS	CHEMICALS	2	94.00	18.00	9.60	4906	6,269	7,320	6.500	13.5	2010.04
KOHSEI MARU	MOLTEN SULPHER	2	99.12	14.50	7.60	2987	3,999	2,071	5.879	13.0	2019.03
KOKAMARU	MOLTEN SULPHER	2	82.05	13.60	7.00	2362	2,999	1,596	5.55	12.8	2017.09
CHISHU	MOLTEN CAPROLACTAM	3	79.97	13.20	6.20	1865	1,866	1,689	4.300	13.5	2003.09
Total 11ships						164,872	242,402				

# Particulars



【Domestic】

Name	Cargoes	I M O	Dimensions(M)			GRT	DWT	Capacity	Draft	Speed	Built
			Length	Breadth	Depth			M3	M	Knots	
KOKUHO MARU	CHEMICALS	2	80.60	12.20	5.80	1066	2,305	2,499	5.77	13.2	2008.06
KOKUSHU MARU	LAG		69.95	12.20	5.44	999	1,320	1,714	5.15	13.0	2015.07
NO2 RYOEI MARU	CHEMICALS	2	72.00	11.50	5.40	748	1,843	1,849	4.80	11.9	2007.06
RYOEI MARU	CHEMICALS	2	72.00	11.50	5.40	747	1,879	1,849	4.80	12.5	2004.05
RYOJITSU MARU	CHEMICALS	2	72.00	11.00	5.00	696	1,645	1,397	4.45	12.0	2005.09
EIKA MARU	CHEMICALS	2	64.46	10.00	4.50	498	1,259	1,230	4.18	11.0	2006.11
NO2 EIKA MARU	CHEMICALS	2	64.46	10.00	4.50	499	1,265	1,230	4.20	11.8	2010.04
KOKUSHO MARU	CHEMICALS	2	64.80	10.20	4.50	498	1,311	1,234	4.26	11.7	2008.10
SORYO MARU	CHEMICALS	2	64.98	10.00	4.50	498	1,296	1,229	4.14	10.5	2009.02
NO2 SHUKA MARU	CHEMICALS	2	64.98	10.00	4.50	498	1,285	1,229	4.35	11.8	2008.05
WAKA MARU	CHEMICALS	3	65.98	10.00	4.50	498	1,314	1,369	4.14	10.6	2010.05
SHINNICHI RYUMARU	CHEMICALS	2	41.75	7.00	3.35	179	266	182	2.89	10.0	1994.04
KOHSHIN MARU	CHEMICALS	2	55.87	9.20	4.00	380	829	636	4.18	11.0	1998.06
NO3 SUZUKA MARU	CHEMICALS	2	55.87	9.20	4.00	374	852	620	4.08	11.0	1997.11
OGATA MARU	CHEMICALS	2	64.19	10.00	4.50	499	1,215	1,230	4.15	11.3	2018.09
SURPHUR TRINITY	CHEMICALS	2,3	64.50	12.00	5.00	749	1,469	653	4.36	12.4	2021.07
SHOEI MARU	LAG		71.50	12.50	5.55	998	1,448	1,718	4.73	12.8	2022.02
Total 17ships						10,424	22,801				