

A conceptual image for a company profile. It features a world map where the continents are represented by large, jagged icebergs floating in a deep blue ocean. The sky is a lighter blue, and the water shows ripples. The overall color palette is various shades of blue.

# COMPANY PROFILE

国華産業株式会社  
KOKUKA SANGYO CO.,LTD

We founded Kokuka Sangyo Co., Ltd. in 1947 and have been involved in the shipping industry, starting with the transportation coal, carbon disulfide, caustic soda, and other raw materials used in the artificial silk industry with our own vessels. Since then, we have expanded our business to include the transport of organic and specialty chemicals. To achieve these goals, we built Japan's first chemical tanker, molten sulfur carrier, medium-temperature and medium-pressure liquid ammonia tanker, the world's first molten phthalic anhydride and molten caprolactam carriers, and so forth. Now, with over 75 years of history behind us, we are engaged in the coastal and international shipping of mainly methanol and molten sulfur. We humbly request your continued support as we intensify our efforts as a company to provide higher-quality services with a focus on safety so that we can inspire trust befitting our knowledge and experience with over 75 years.

Kimifumi Imagawa  
President

### Corporate Philosophy

- To contribute to economic and social development through the maritime transportation of chemical products.
- To earn the trust of society and customers through high-quality services that treat safe operations as the top priority.
- To conduct business with emphasis on compliance.
- To manage the company so as to ensure that the employees work happily and find the job rewarding.

## 【Profile】

### 【Establishment】

March 3, 1947

### 【Capital】

JPY 100 million

### 【Main shareholders】

MITSUBISHI GAS CHEMICAL  
COMPANY, INC.

TATSUMI SHOKAI CO.,LTD.

### 【Employees】

103

(as of April 2023, including  
affiliated companies)

### 【Headquarters】

RESONA SHIMBASHI BUILDING 5F

16-4, SHIMBASHI, 1-CHOME,

MINATO-KU, TOKYO, 105-0004 JAPAN

TEL:+81-3-3593-3663

FAX:+81-3-3593-2272

### 【MAP】



## 【History】

- 1947 Kokuka Sangyo Kaiun Co., Ltd. is established, with marine transport operation, non-life insurance agent operation and commercial business operation. Begins shipping operations for coals, Carbon sulfide and Sodium hydroxide.  
Headquarters is established in Ikuta-ku in Kobe City with JPY195,000 in capital.
- 1952 Headquarters is relocated to Kita-ku, Osaka City.
- 1954 The company name is changed to KOKUKA SANGYO CO., LTD.
- 1956 First Sodium hydroxide carrier is completed.  
Mihara Branch opens.
- 1960 First chemicals tanker "KOKURYU MARU" is completed, begins domestic operation.
- 1961 Capital increases to JPY 5 million by capital participation of Japan Gas Chemical Co., Inc. (current MITSUBISHI GAS CHEMICAL COMPANY, INC.).
- 1964 A chemicals tanker "KOKUHO MARU" is completed, enters oceangoing business.  
The world's first tanker for high temperature molten materials "OUKA MARU" is completed for shipping Molten phthalic anhydride.  
The Japan's first medium temperature, medium pressure ammonia tanker "KOKUSHU MARU" is completed.
- 1967 The world's first molten Caprolactam carrier "EIKA MARU" is completed.  
Japan's first molten Sulphur carrier "KOKA MARU" is completed.
- 1968 Tokyo branch opens in Nishi-shinbashi, Minato-ku, Tokyo.  
Stainless tanker "YUKA MARU" is completed.
- 1975 Capital increases to JPY 250 million, Matsuyama Branch opens.
- 1980 IWAI KAIUN LTD. is established.
- 1989 Container ship "NISHO MARU" is completed.
- 2001 Stock is transferred from TEIJIN LIMITED to MITSUBISHI GAS CHEMICAL COMPANY, INC.
- 2002 Enters business of shipping Methanol from Saudi Arabia.
- 2003 Enters business of shipping Methanol from Venezuela.
- 2005 Headquarters is relocated to Toranomon, Minato-ku, Tokyo.  
A Hydrogen peroxide carrier "RYOJITSU MARU" is completed.
- 2008 Super eco ship "KOKUHO MARU" is completed.
- 2009 Our largest chemicals tanker "JOSE PROGRESS" is completed.
- 2010 Headquarters is relocated to Uchisaiwaicho, Chiyoda-ku, Tokyo.
- 2011 Capital reduction to JPY 100 million.
- 2013 Receives TATSUMI SHOKAI CO., LTD.'s capital participation.
- 2015 An LAG carrier "KOKUSHU MARU" is completed.
- 2020 Headquarters is rebcated to Shimbashi, Minato-ku, Tokyo.

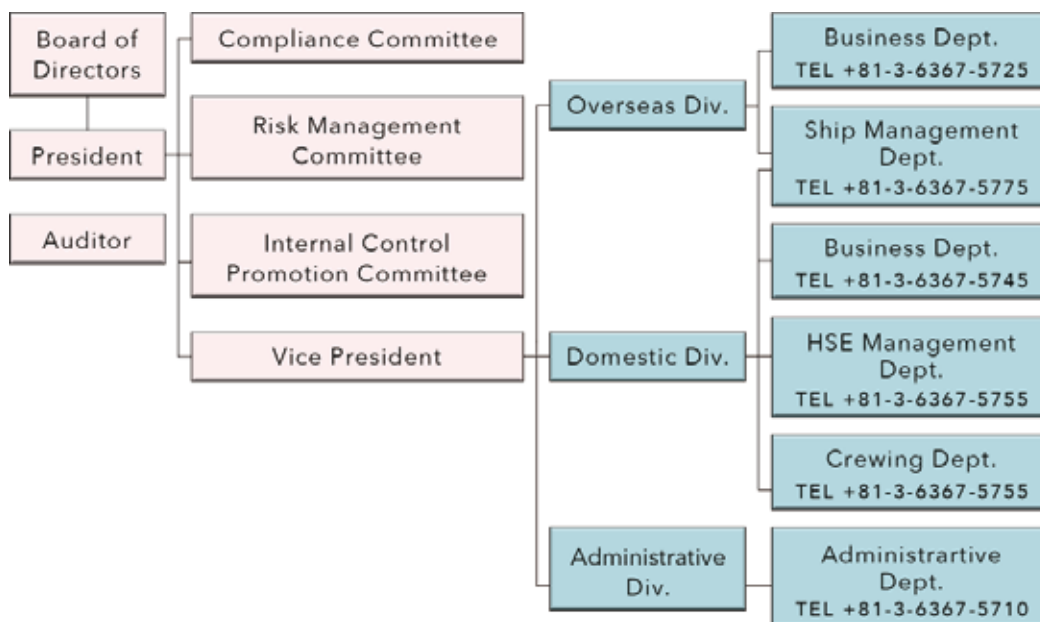
# Company Profile

COMPANY

## 【Directors】

President	Kimifumi Imagawa
Vice President	Shinichi Tagashira
Director	Takeyuki Kume
Director	Hideaki Akase
Executive Officer	Kiyoshi Suminaga
Auditor	Suguru Yoshimoto
Auditor	Kazuma Kiuri

## 【Organization】



**[Affiliated Companies]**

IWAI KAIUN LTD.      RESONA SHIMBASHI BUILDING 5F  
16-4, SHIMBASHI, 1-CHOME, MINATO-KU,  
TOKYO, 105-0004 JAPAN  
TEL +81-3-6367-5799  
FAX +81-3-3593-2272

KSK (PANAMA) CORP.  
M&K OCEAN S.A.  
COURAGEOUS & KSK(PANAMA) S.A.  
GLORIOUS & KSK(PANAMA) S.A.  
VIGOROUS & KSK(PANAMA) S.A.



**【Main Customer】**

ADEKA LOGISTIC CORPORATION,  
ASAHI TANKER CO., LTD.  
AST CORPORATION  
CG ESTER CORPORATION  
JFE LOGISTICS CORPORATION  
Marubeni Corporation  
MARUZEN PETROCHEMICAL CO., LTD.  
Mexichem Fluor Japan Limited.  
MITSUBISHI CHEMICAL LOGISTICS CORPORATION  
Mitsubishi Corporation  
MITSUBISHI GAS CHEMICAL COMPANY, INC.  
MITSUI & CO., LTD.  
NANIWA TANKER CO., LTD.  
New Japan Chemical Co., Ltd.  
Sumika Logistics Co., Ltd.  
Sumitomo Chemical Co., Ltd.  
TATUMI SHOKAI CO., LTD  
Tokuyama Logistics Corp.  
UBE INDUSTRIES, LTD.

**【Cargoes】**

1.4-Butanediol	Acetic acid
Acetone	Acrylonitrile
Allyl alcohol	Benzene
Black oil	Clean Oil
Coal	Cumene
DMF	Ethanol
Ethylbenzene	Ethylene dichloride (EDC)
Ethylene glycol	Formalin
Hydrochloric acid	Hydrogen peroxide
Liquid ammonia	Methanol
Methyl ethyl ketone (MEK)	MMA
Molten sulphur	Neopentyl glycol
Nitric acid	Petroleum products
Plasticizers	Sodium hydroxide
Styrene monomer	Toluene
Vinyl acetate monomer	Xylenes
Others	





**Safety of the ships,  
Human lives and health,  
Environment,  
Property**  
maintaining and preserving them  
is our principle.

It is our social mission to make broad social contribution through the marine transport of chemical products, and we believe our top priorities are safe marine navigation and environmental protection. In order to thoroughly communicate our belief both internally and externally, we have established the above “Principle”.

For the realization of the Principle, we have created “Safety Control Manual” in accordance with the ISM Code, and are utilizing it as the guidelines for our operational activities. Additionally, we continuously make improvements in the manual by applying the PDCA Cycle.

Recognizing that accidents must not occur, we have developed a system within our company to allow for the operations based on the technical and specialist perspectives. We have also developed a structure for the system to allow for individual teams to operate jointly and organically. The system consists of two teams-“HSE Management Dept.,Crewing Dept. and Ship Management Dept.”

With our charter ship owners and domestic shipping management companies, we establish “Chartered Ship Management Regulation” and provide a support system based on the information provided about crew, maintenance record and such. We have also organized “KOKUKA Management Committee” in order to conduct joint safety activities by exchanging information and views.

### Methanol Shipping

Currently, we operate six chemicals tankers of between 6,000DWT and 47,000DWT, mainly carrying Methanol being produced in Saudi Arabia, Brunei and Venezuela, Trinidad and Tobago. Primarily transporting from Middle East (Saudi Arabia) to the Far East and the Southeast Asia, from Southeast Asia (Brunei) to Far East and Southeast Asia, from South America (Venezuela, Trinidad and Tobago) to North America and Europe, we are currently shipping 1.8 million ton annually. To meet the growing demands created by the increasing production capability of the plants, we are further expanding our transportation capacity.



KOHZAN MARU V

annually. To meet the growing

### Specialized Chemicals Shipping

We offer shipping with high temperature Molten materials carriers. We have more than 40 years of experience in this area as the global pioneer, especially being highly reputable in the services provided for molten Sulphur.



KOHSEI MARU

# Service

# SERVICES

## 【DOMESTIC DEPT.】



KOKUHO MARU



KOKUSHU MARU



No2 SHUKA MARU

### Liquid Chemicals Shipping

We offer domestic chemicals carrier with volume ranging from 1,000 to 2,000DWT, and are equipped with a variety of ships to handle all types of chemicals, running services nationwide.

Shipping items include general

liquid chemicals such as Methanol, Xylene and so on, as well as liquid

Ammonia, Hydrogen peroxide and Carbon disulfide. We

have gained trusts of our customers with our specialty tankers, operated with the many years of experience in the field, and

with our commitment to stable and safe shipping as our top priorities. We are daily making

further efforts for improvements in order to respond to the diverse

requests we receive.

### Specialized Chemicals Shipping

We offer shipping with high temperature Molten materials carriers.

# Particulars

SHIPS

【Oceangoing】

Name	Cargoes	I M O	Dimensions(M)			GRT	DWT	Capacity	Draft	Speed	Built
			Length	Breadth	Depth			M3	M	Knots	
JOSE PROGRESS	CHEMICALS	3	185.93	32.20	19.30	30969	47,018	58,432	11.972	15.1	2009.02
KOHZAN MARU V	CHEMICALS	2	182.03	28.20	18.20	25184	37,784	46,695	11.30	14.9	2007.10
KOHZAN MARU VI	CHEMICALS	2	185.92	32.14	18.60	30017	47,962	55,211	12.220	14.9	2020.11
SAKURA ADVANCE	CHEMICALS	2	170.00	26.80	15.60	19349	27,000	33,600	10.281	14.3	2010.10
SAKURA CREST	CHEMICALS	2	170.00	26.80	15.60	19349	26,980	33,600	10.281	14.3	2011.08
SAKURA BELLE	CHEMICALS	2	170.00	26.80	15.60	19349	26,960	33,600	10.281	14.3	2011.03
ACACIA	CHEMICALS	2	132.40	20.00	11.90	8535	13,565	14,561	8.800	14.0	2010.09
KOHSEI MARU	MOLTEN SULPHER	2	99.12	14.50	7.60	2987	3,999	2,071	5.879	13.0	2019.03
KOKAMARU	MOLTEN SULPHER	2	82.05	13.60	7.00	2362	2,999	1,596	5.55	12.8	2017.09
Total 9ships						158,101	234,267				

# Particulars

SHIPS

【Domestic】

Name	Cargoes	IMO	Dimensions(M)			GRT	DWT	Capacity	Draft	Speed	Built
			Length	Breadth	Depth			M3	M	Knots	
KOKUHO MARU	CHEMICALS	2	80.60	12.20	5.80	1066	2,305	2,499	5.77	13.2	2008.06
KOKUSHU MARU	LAG		69.95	12.20	5.44	999	1,320	1,714	5.15	13.0	2015.07
NO2 RYOEI MARU	CHEMICALS	2	72.00	11.50	5.40	748	1,843	1,849	4.80	11.9	2007.06
RYOEI MARU	CHEMICALS	2	72.00	11.50	5.40	747	1,879	1,849	4.80	12.5	2004.05
RYOJITSU MARU	CHEMICALS	2	72.00	11.00	5.00	696	1,645	1,397	4.45	12.0	2005.09
EIKA MARU	CHEMICALS	2	64.46	10.00	4.50	498	1,259	1,230	4.18	11.0	2006.11
NO2 EIKA MARU	CHEMICALS	2	64.46	10.00	4.50	499	1,265	1,230	4.20	11.8	2010.04
KOKUSHO MARU	CHEMICALS	2	64.80	10.20	4.50	498	1,311	1,234	4.26	11.7	2008.10
SORYO MARU	CHEMICALS	2	64.98	10.00	4.50	498	1,296	1,229	4.14	10.5	2009.02
NO2 SHUKA MARU	CHEMICALS	2	64.98	10.00	4.50	498	1,285	1,229	4.35	11.8	2008.05
WAKA MARU	CHEMICALS	3	65.98	10.00	4.50	498	1,314	1,369	4.14	10.6	2010.05
OGATA MARU	CHEMICALS	2	64.19	10.00	4.50	499	1,215	1,230	4.15	11.3	2018.09
SULPHUR TRINITY	CHEMICALS	2,3	64.50	12.00	5.00	749	1,469	653	4.36	12.4	2021.07
SHOEI MARU	LAG		71.50	12.50	5.55	998	1,448	1,718	4.73	12.8	2022.02
Total 14ships						9,491	20,854				